

**Available
For Lease**

Old Town Office Suite

Douglas & Washington

914 E. Douglas | Wichita, KS

Building Features:

- Newly Remodeled!
- Attractive Facade
- High Ceilings
- Exposed Brick Walls
- Flexible Floor Plan
- Rear Entrance
- Abundant Parking
- Available Now

Don't miss out on the opportunity to be located in one of the most sought out destinations in Wichita!



Newly Remodeled Office Suite
Located @ Douglas & Washington "In the Heart of Wichita"

Suite 200-201:

556 Sq. Ft.

\$926.67/Month Full Service

This Historic Old Town Office Suite is conveniently located at the northwest corner of Douglas and Washington in the heart of downtown. This property offers excellent access and visibility, and abundant public parking. This attractive suite is close to numerous shops, restaurants, museums, and other businesses in the Old Town District.

For Information Contact:

Jake Ramstack

316-618-1100

jake@insitere.com

Curt Robertson

316-618-1100

crobertson@insitere.com

InSite
Real Estate Group

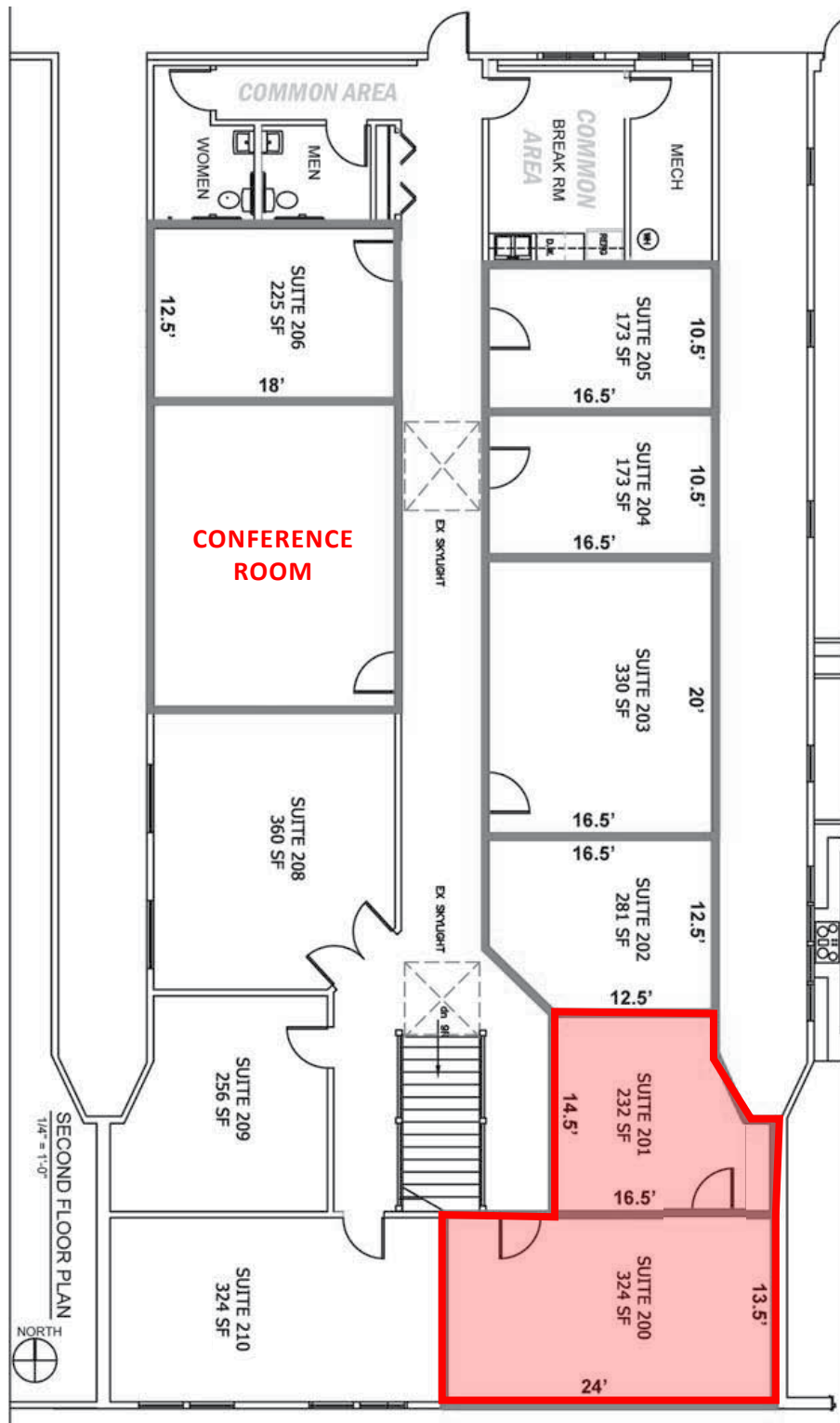


**:: Available
For Lease**

Old Town Office Suite Douglas & Washington

914 E. Douglas | Wichita, KS

Floor Plan

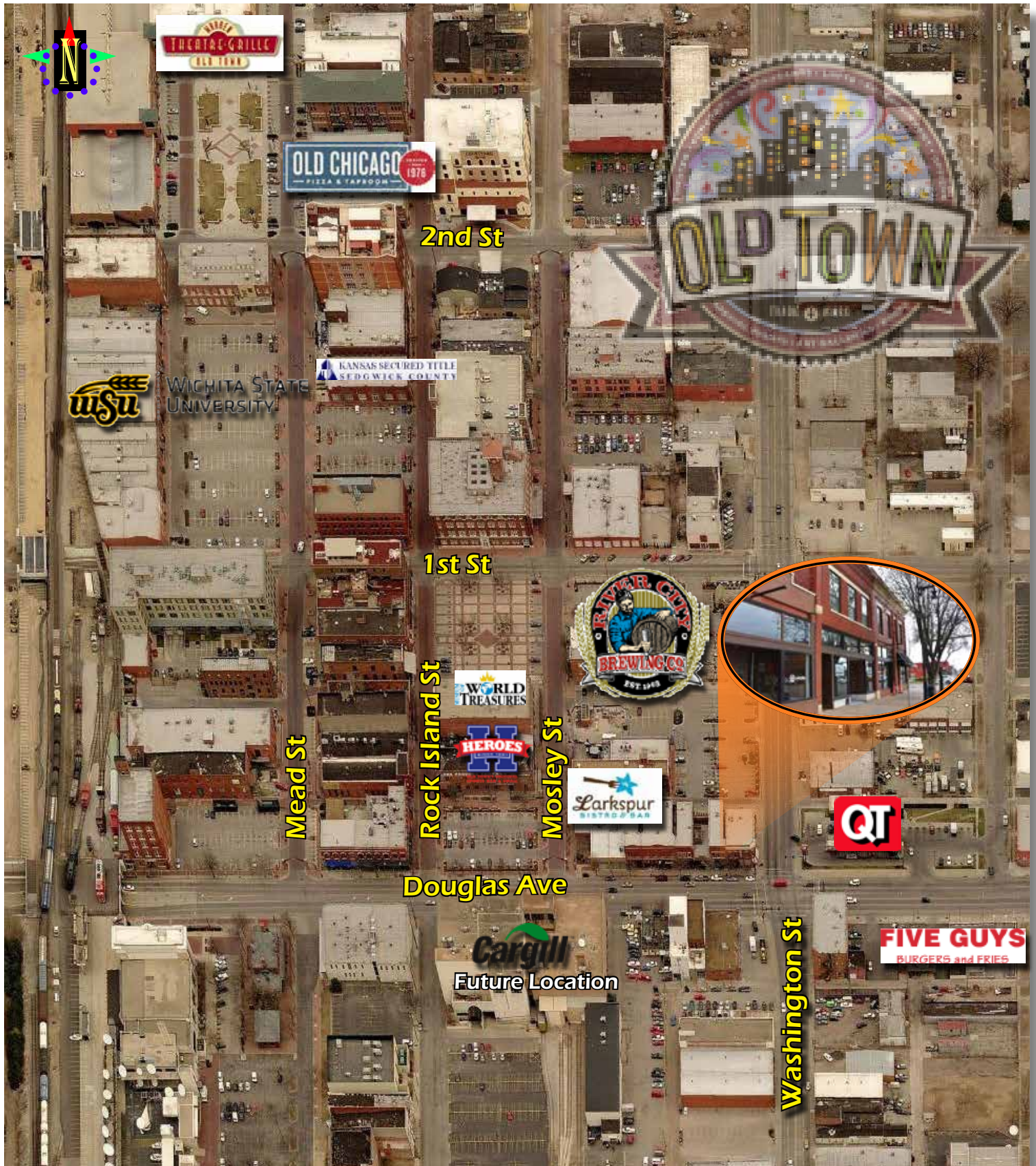


**:: Available
For Lease**

Old Town Office Suite Douglas & Washington

914 E. Douglas | Wichita, KS

InSite
Real Estate Group
608 W. Douglas, Suite 106
Wichita, KS 67203



**Available
For Lease**

**Old Town Office Suite
Douglas & Washington**
914 E. Douglas | Wichita, KS

InSite
Real Estate Group
608 W. Douglas, Suite 106
Wichita, KS 67203